


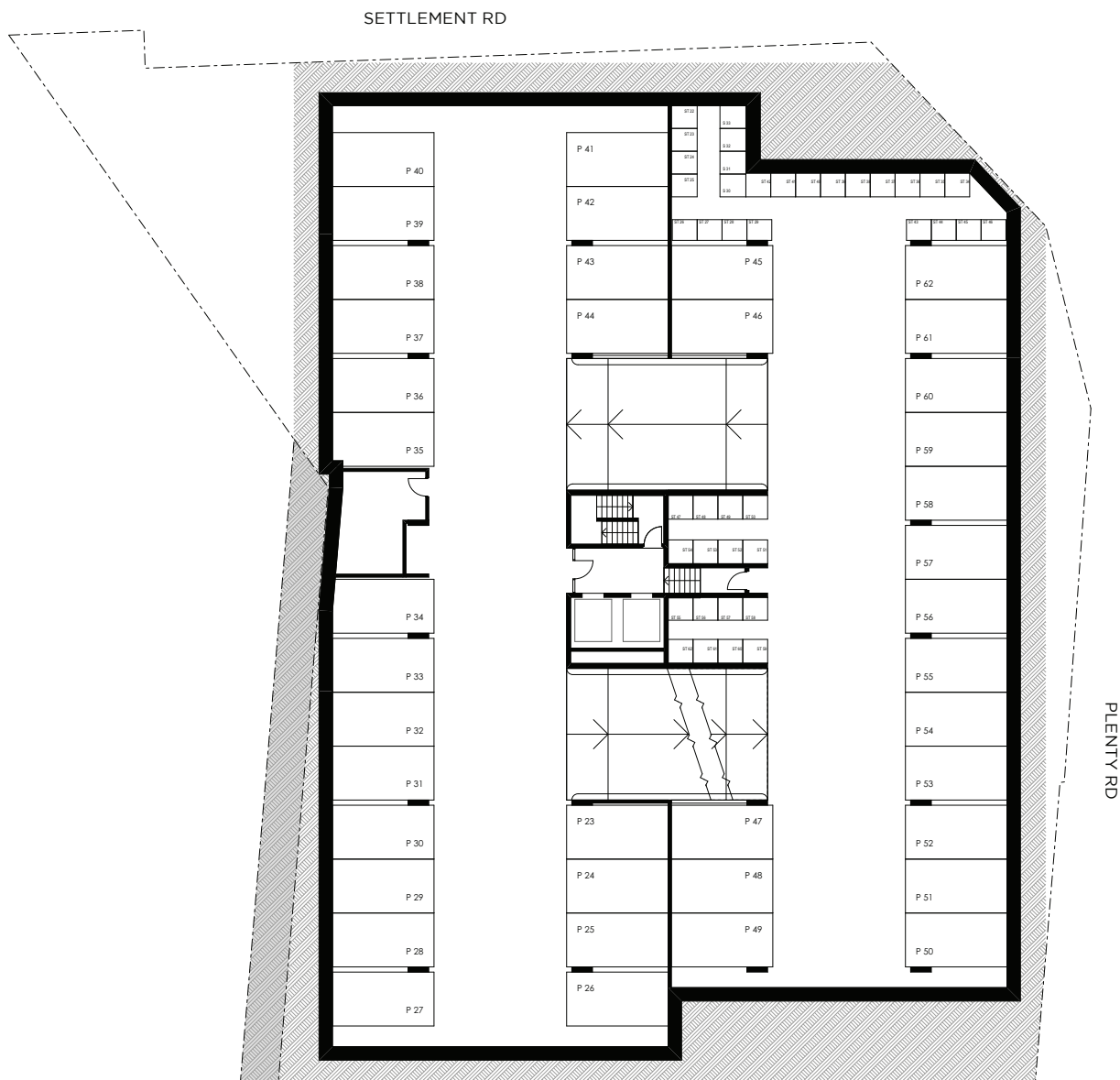
Latrobe Place


BUNDOORA

BASEMENT 3



Disclaimer: Please note that the material contained herein has been produced prior to detailed design and construction, is indicative only and does not constitute a representation by the Vendor, Agent, or Vendor's consultant in respect to the size, form, dimensions, or layout of the apartment. Furniture shown is for illustration only. Purchasers are not entitled to rely on these materials. Changes may be made to detail layouts during the development in accordance with the provisions of the Contract of Sale or the building and/or planning requirements. Prospective purchasers must make and rely on their own enquiries. Areas are approximate. They relate to areas of the building at the current stage of design and are reliant upon the information available. All areas are subject to survey. Residential area calculations are based on "Method of Measurement for Residential Property, Property Council of Australia." Any dimensions and areas are approximate only and subject to change.






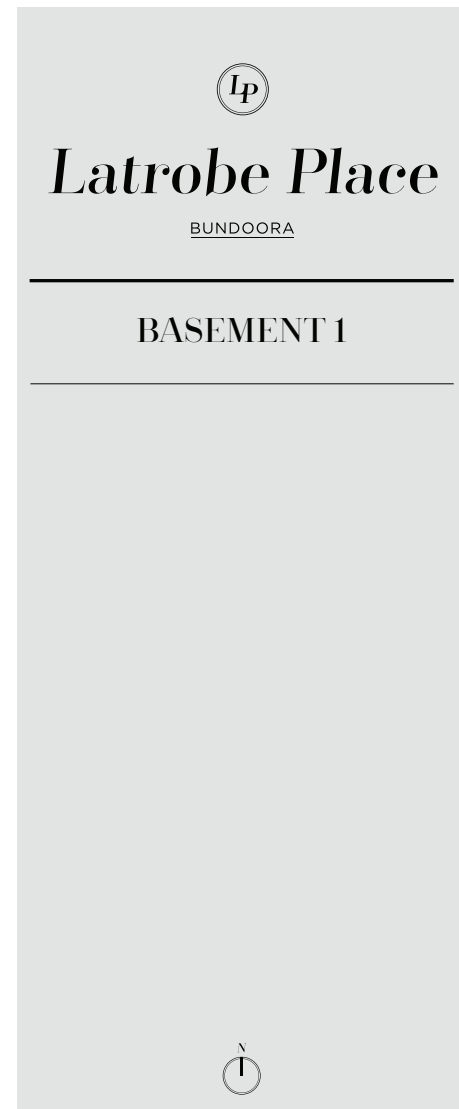
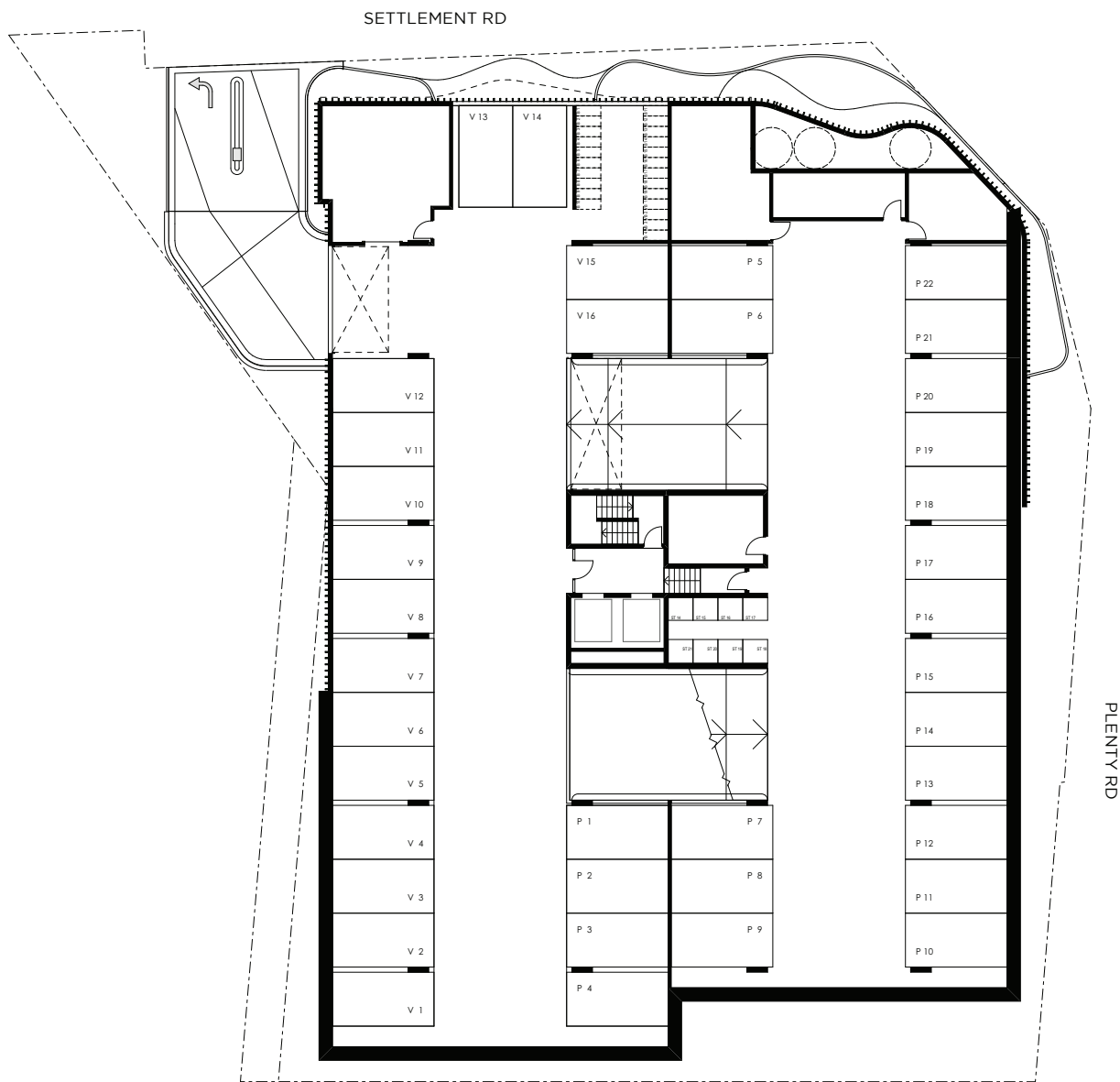
Latrobe Place

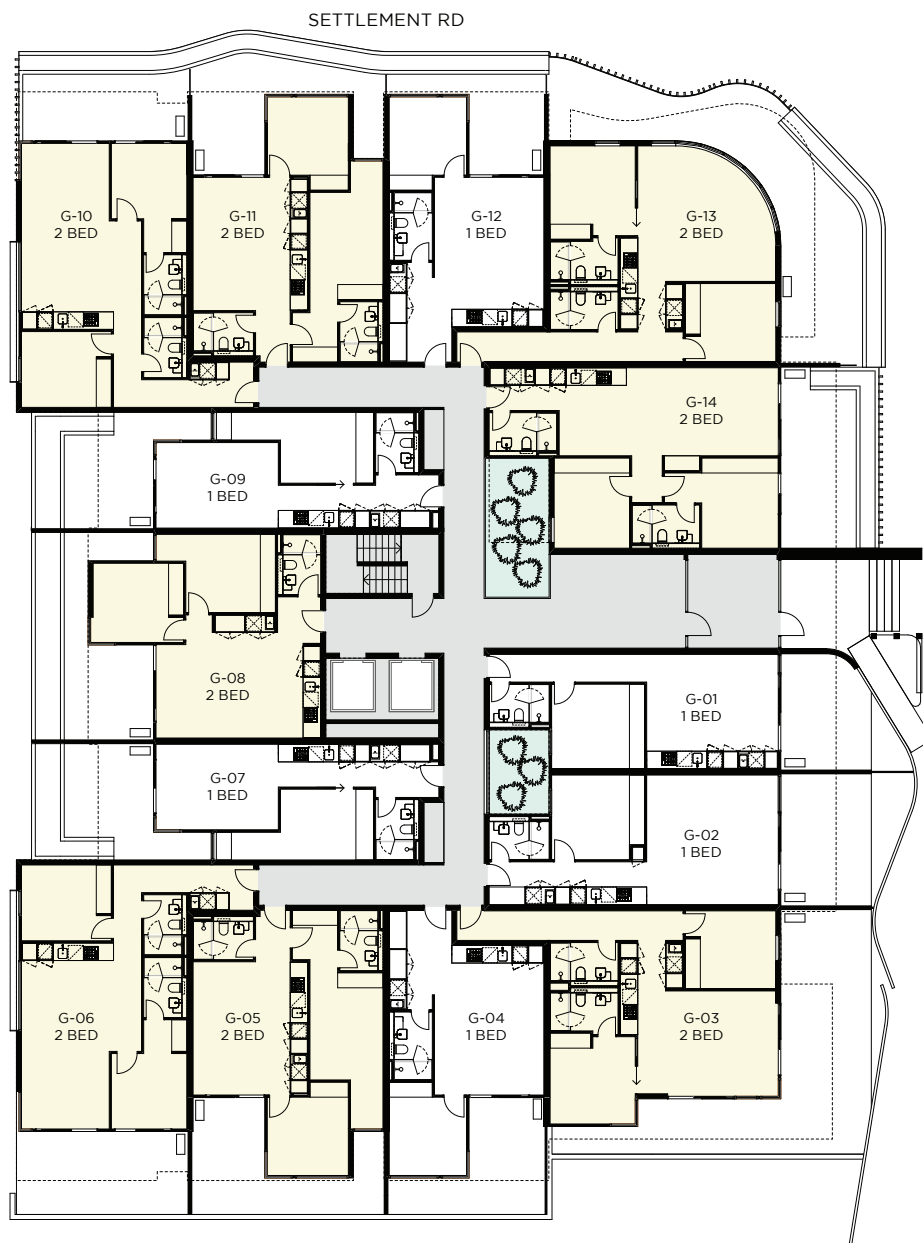
BUNDOORA

BASEMENT 2



Disclaimer: Please note that the material contained herein has been produced prior to detailed design and construction, is indicative only and does not constitute a representation by the Vendor, Agent, or Vendor's consultant in respect to the size, form, dimensions, or layout of the apartment. Furniture shown is for illustration only. Purchasers are not entitled to rely on these materials. Changes may be made to detail layouts during the development in accordance with the provisions of the Contract of Sale or the building and/or planning requirements. Prospective purchasers must make and rely on their own enquiries. Areas are approximate. They relate to areas of the building at the current stage of design and are reliant upon the information available. All areas are subject to survey. Residential area calculations are based on "Method of Measurement for Residential Property, Property Council of Australia." Any dimensions and areas are approximate only and subject to change.





Latrobe Place

BUNDOORA

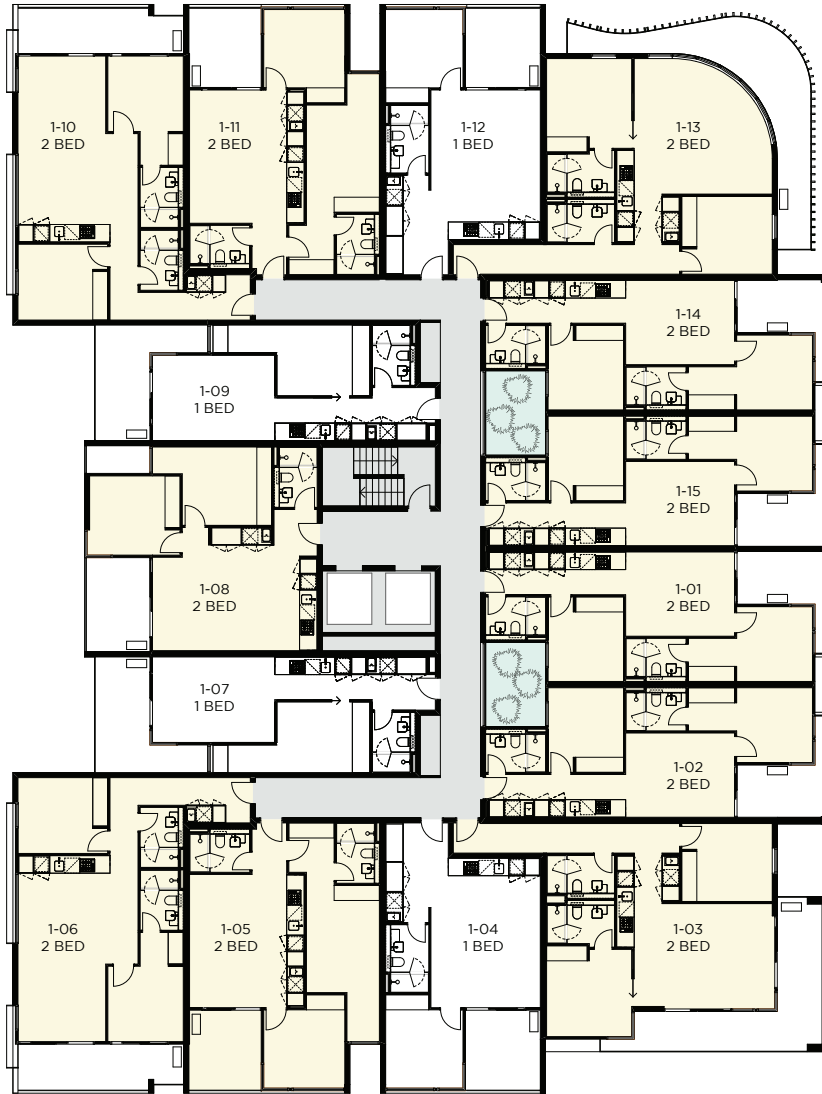
GROUND FLOOR

-  1 BEDROOM
-  2 BEDROOM



Disclaimer: Please note that the material contained herein has been produced prior to detailed design and construction, is indicative only and does not constitute a representation by the Vendor, Agent, or Vendor's consultant in respect to the size, form, dimensions, or layout of the apartment. Furniture shown is for illustration only. Purchasers are not entitled to rely on these materials. Changes may be made to detail layouts during the development in accordance with the provisions of the Contract of Sale or the building and/or planning requirements. Prospective purchasers must make and rely on their own enquiries. Areas are approximate. They relate to areas of the building at the current stage of design and are reliant upon the information available. All areas are subject to survey. Residential area calculations are based on "Method of Measurement for Residential Property, Property Council of Australia." Any dimensions and areas are approximate only and subject to change.

SETTLEMENT RD





PLENTY RD



Latrobe Place

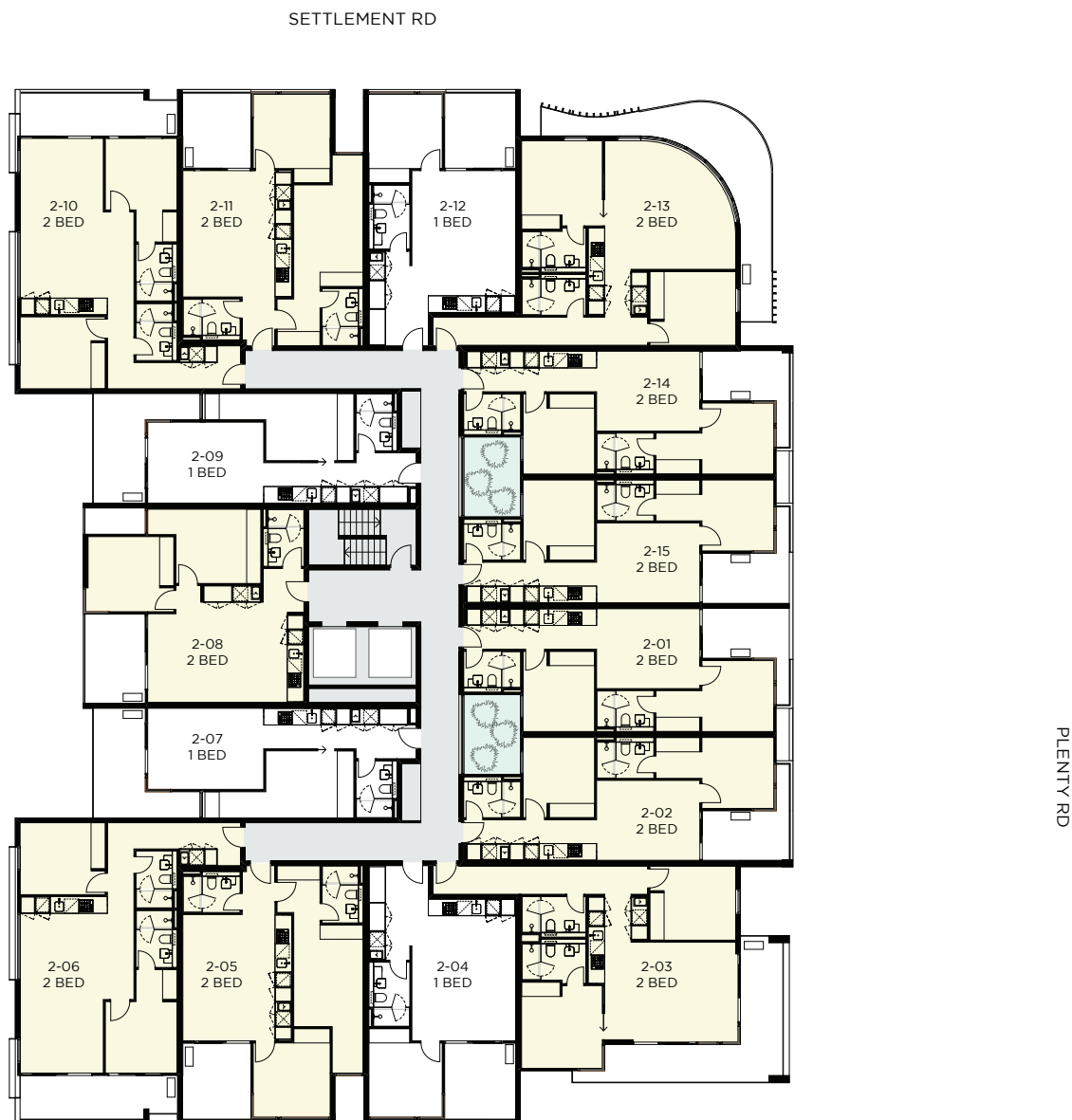
BUNDOORA

FIRST FLOOR

-  1 BEDROOM
-  2 BEDROOM



Disclaimer: Please note that the material contained herein has been produced prior to detailed design and construction, is indicative only and does not constitute a representation by the Vendor, Agent, or Vendor's consultant in respect to the size, form, dimensions, or layout of the apartment. Furniture shown is for illustration only. Purchasers are not entitled to rely on these materials. Changes may be made to detail layouts during the development in accordance with the provisions of the Contract of Sale or the building and/or planning requirements. Prospective purchasers must make and rely on their own enquiries. Areas are approximate. They relate to areas of the building at the current stage of design and are reliant upon the information available. All areas are subject to survey. Residential area calculations are based on "Method of Measurement for Residential Property, Property Council of Australia." Any dimensions and areas are approximate only and subject to change.



Latrobe Place

BUNDOORA

SECOND FLOOR

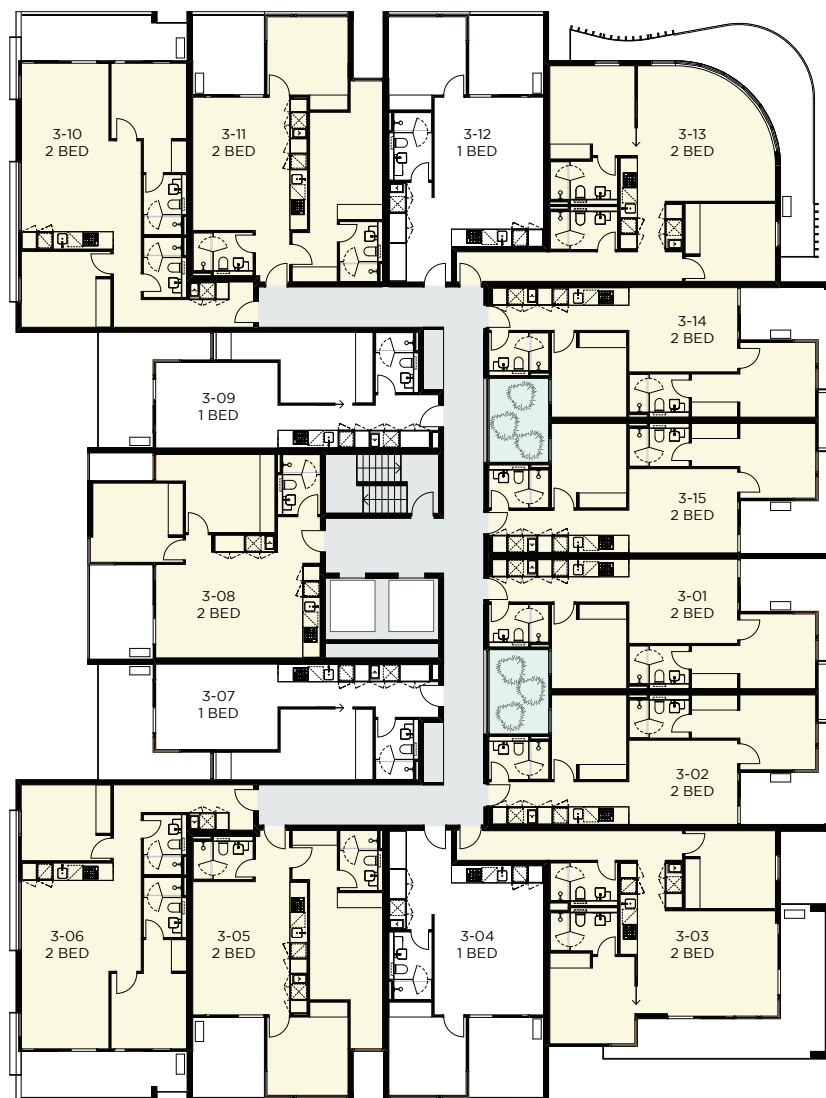
○ 1 BEDROOM

● 2 BEDROOM



Disclaimer: Please note that the material contained herein has been produced prior to detailed design and construction, is indicative only and does not constitute a representation by the Vendor, Agent, or Vendor's consultant in respect to the size, form, dimensions, or layout of the apartment. Furniture shown is for illustration only. Purchasers are not entitled to rely on these materials. Changes may be made to detail layouts during the development in accordance with the provisions of the Contract of Sale or the building and/or planning requirements. Prospective purchasers must make and rely on their own enquiries. Areas are approximate. They relate to areas of the building at the current stage of design and are reliant upon the information available. All areas are subject to survey. Residential area calculations are based on "Method of Measurement for Residential Property, Property Council of Australia." Any dimensions and areas are approximate only and subject to change.

SETTLEMENT RD



PLENTY RD



Latrobe Place

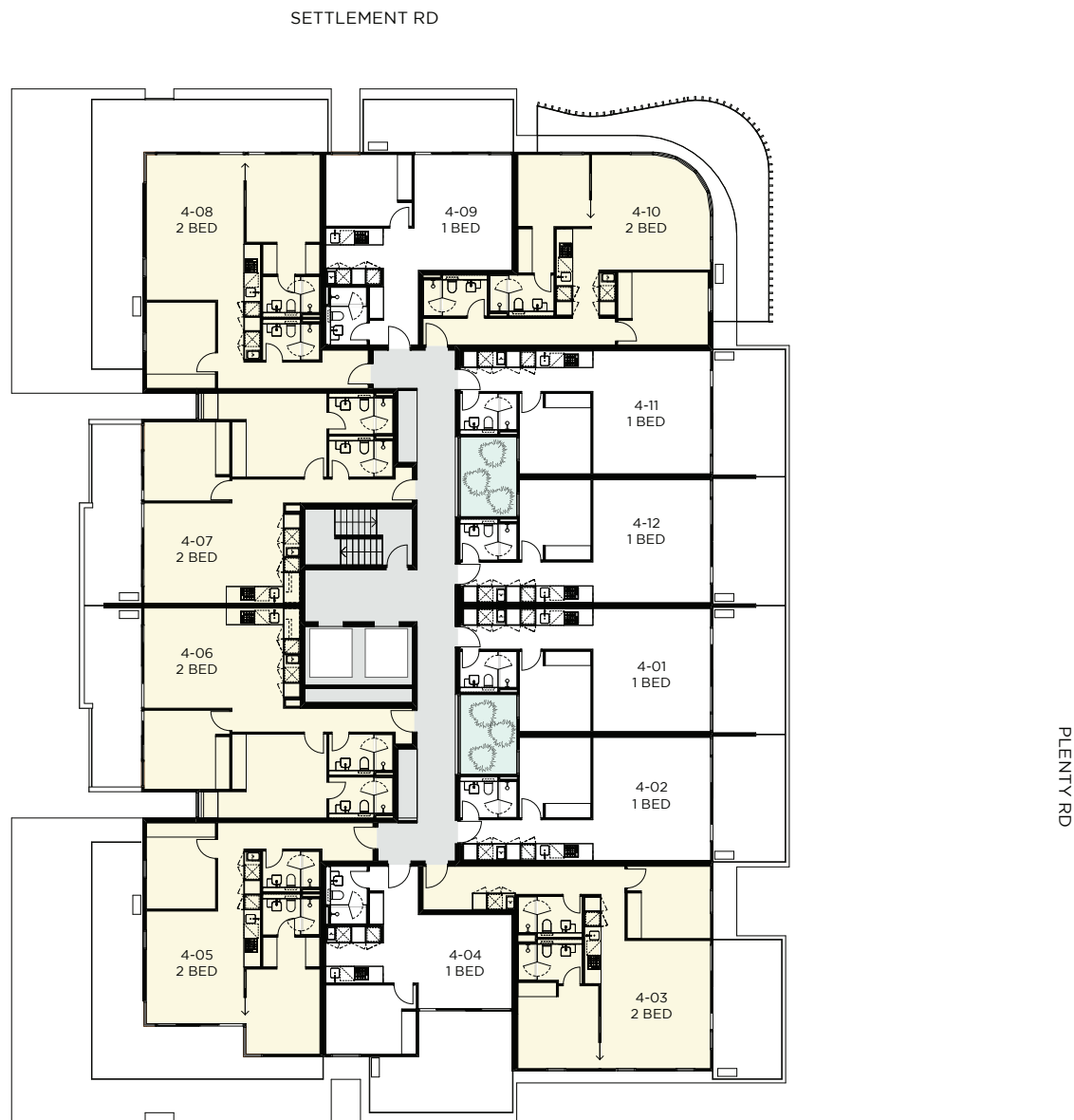
BUNDOORA

THIRD FLOOR

- 1 BEDROOM
- 2 BEDROOM



Disclaimer: Please note that the material contained herein has been produced prior to detailed design and construction, is indicative only and does not constitute a representation by the Vendor, Agent, or Vendor's consultant in respect to the size, form, dimensions, or layout of the apartment. Furniture shown is for illustration only. Purchasers are not entitled to rely on these materials. Changes may be made to detail layouts during the development in accordance with the provisions of the Contract of Sale or the building and/or planning requirements. Prospective purchasers must make and rely on their own enquiries. Areas are approximate. They relate to areas of the building at the current stage of design and are reliant upon the information available. All areas are subject to survey. Residential area calculations are based on "Method of Measurement for Residential Property, Property Council of Australia." Any dimensions and areas are approximate only and subject to change.



Latrobe Place

BUNDOORA

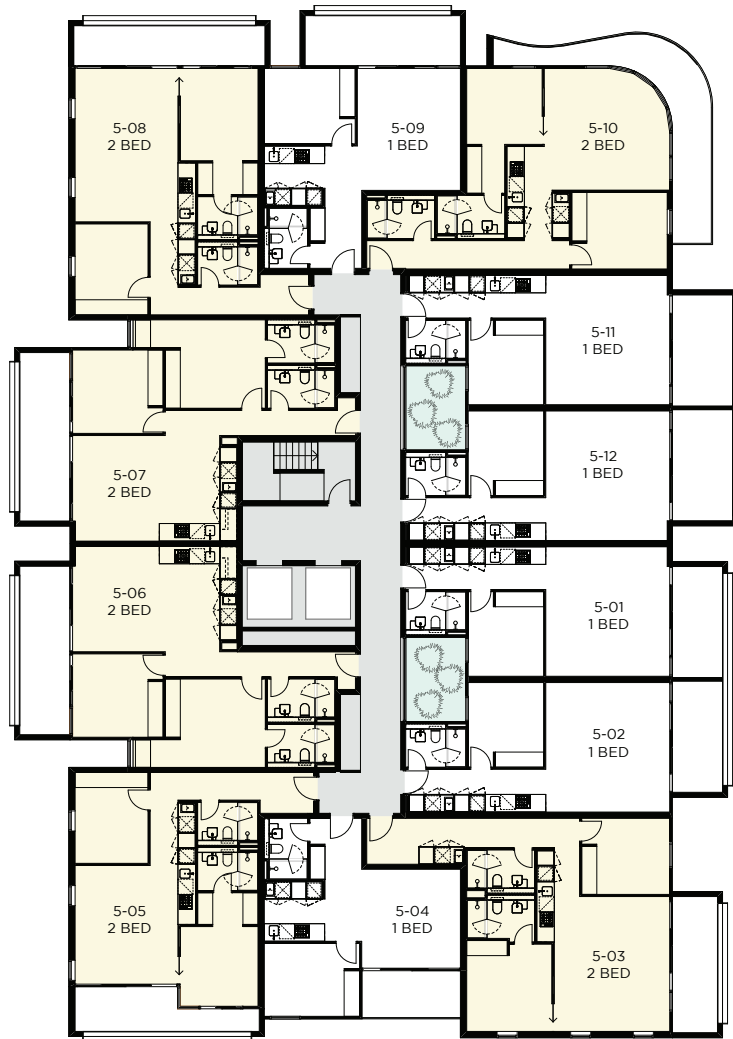
FOURTH FLOOR

-  1 BEDROOM
-  2 BEDROOM



Disclaimer: Please note that the material contained herein has been produced prior to detailed design and construction, is indicative only and does not constitute a representation by the Vendor, Agent, or Vendor's consultant in respect to the size, form, dimensions, or layout of the apartment. Furniture shown is for illustration only. Purchasers are not entitled to rely on these materials. Changes may be made to detail layouts during the development in accordance with the provisions of the Contract of Sale or the building and/or planning requirements. Prospective purchasers must make and rely on their own enquiries. Areas are approximate. They relate to areas of the building at the current stage of design and are reliant upon the information available. All areas are subject to survey. Residential area calculations are based on "Method of Measurement for Residential Property, Property Council of Australia." Any dimensions and areas are approximate only and subject to change.

SETTLEMENT RD



PLENTY RD



Latrobe Place

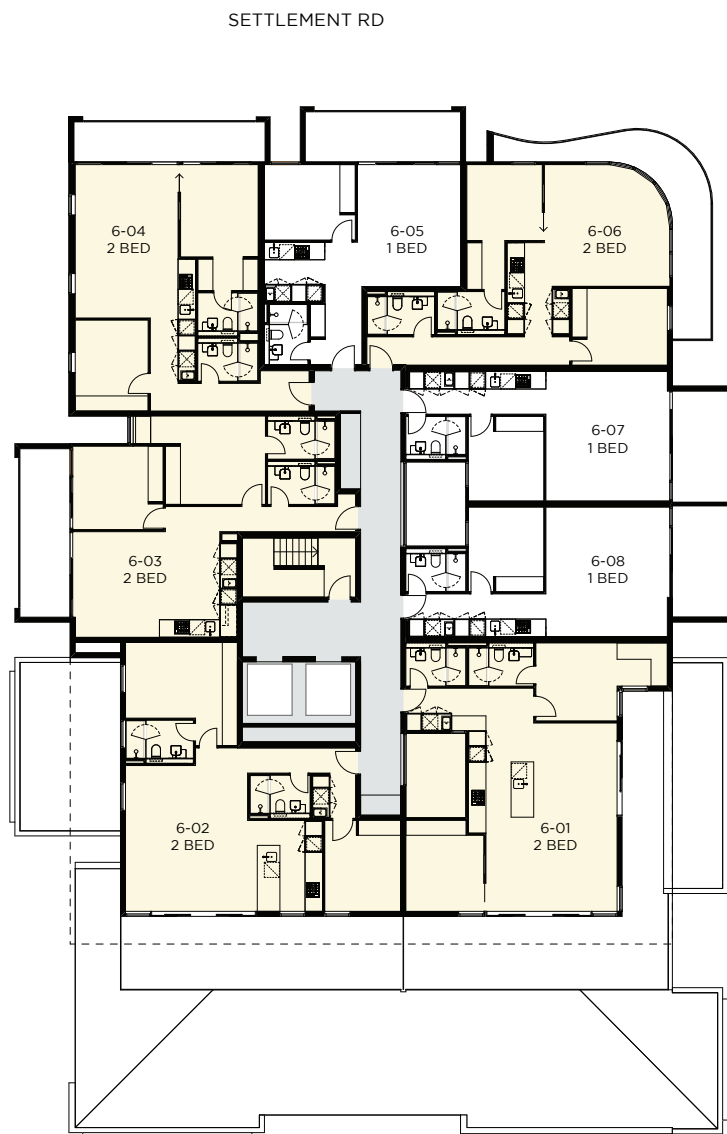
BUNDOORA

FIFTH FLOOR

- 1 BEDROOM
- 2 BEDROOM



Disclaimer: Please note that the material contained herein has been produced prior to detailed design and construction, is indicative only and does not constitute a representation by the Vendor, Agent, or Vendor's consultant in respect to the size, form, dimensions, or layout of the apartment. Furniture shown is for illustration only. Purchasers are not entitled to rely on these materials. Changes may be made to detail layouts during the development in accordance with the provisions of the Contract of Sale or the building and/or planning requirements. Prospective purchasers must make and rely on their own enquiries. Areas are approximate. They relate to areas of the building at the current stage of design and are reliant upon the information available. All areas are subject to survey. Residential area calculations are based on "Method of Measurement for Residential Property, Property Council of Australia." Any dimensions and areas are approximate only and subject to change.



Latrobe Place

BUNDOORA

SIXTH FLOOR

○ 1 BEDROOM

● 2 BEDROOM



Disclaimer: Please note that the material contained herein has been produced prior to detailed design and construction, is indicative only and does not constitute a representation by the Vendor, Agent, or Vendor's consultant in respect to the size, form, dimensions, or layout of the apartment. Furniture shown is for illustration only. Purchasers are not entitled to rely on these materials. Changes may be made to detail layouts during the development in accordance with the provisions of the Contract of Sale or the building and/or planning requirements. Prospective purchasers must make and rely on their own enquiries. Areas are approximate. They relate to areas of the building at the current stage of design and are reliant upon the information available. All areas are subject to survey. Residential area calculations are based on "Method of Measurement for Residential Property, Property Council of Australia." Any dimensions and areas are approximate only and subject to change.